

AUSTRALIA'S

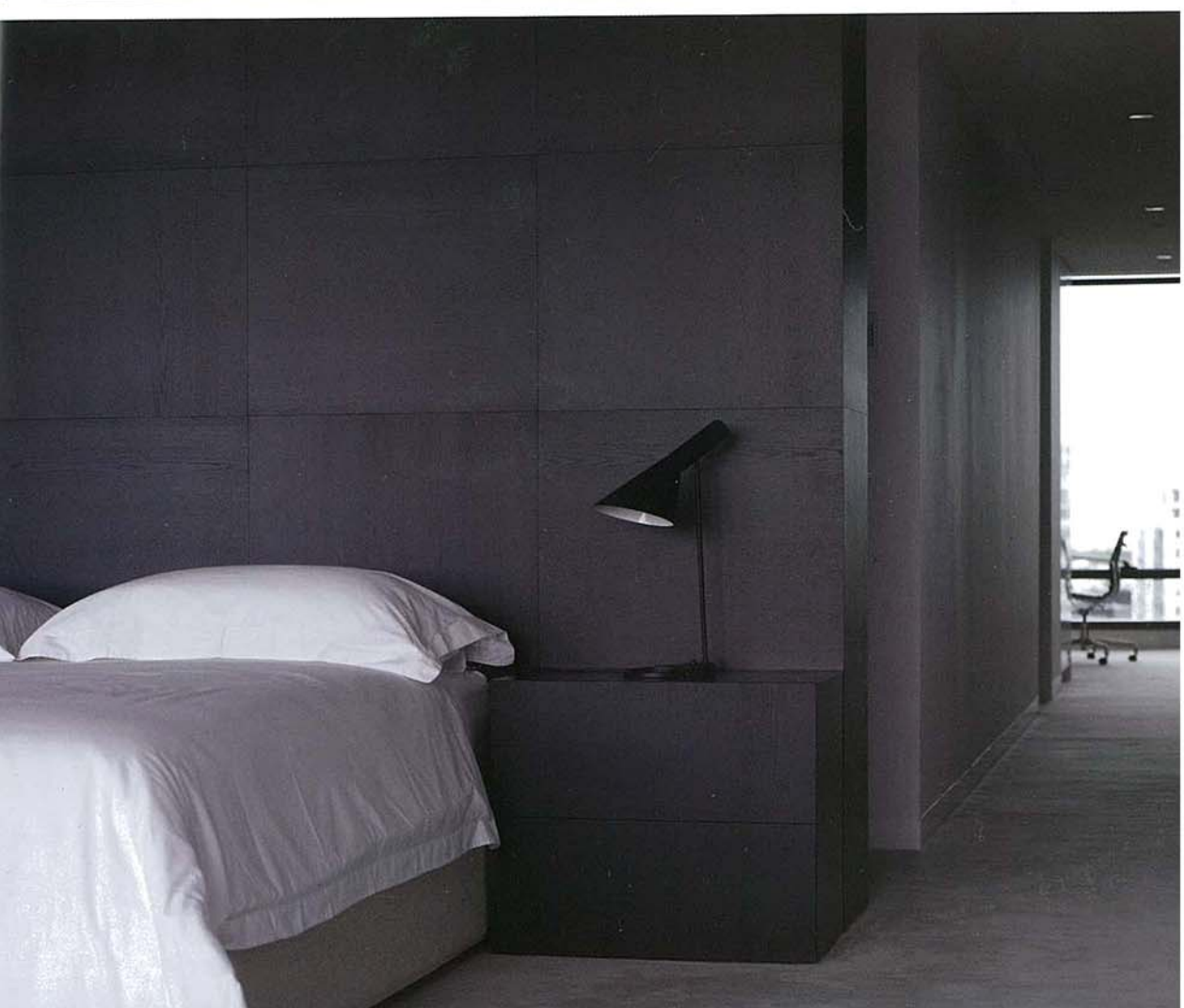
BEST INTERIORS

EDITED BY GARY TAKLE

think



MELBURNIAN APARTMENT







Daniel Stellini Designer

“What remains consistent, despite the size and nature of the project, is Carr’s commitment to ensuring the clients success by using design excellence, budgetary control and exceptional service as a major instrument of that success.”

High above Melbourne’s bustling St. Kilda Road, The Melburnian Apartment –designed by the infamously talented team at Carr Design – is sophisticated to the finest degree, bringing together inner urban living in a stylish interior.

The space was previously two apartments that were amalgamated by the previous owner. Carr was given the challenge to redesign the poorly executed spaces and responded by repositioning the high activity areas – living, cooking and dining – to the north to run the length of the panoramic skyline. The apartment’s four bedrooms were placed to the south so that they could take in views to Port Melbourne and Port Phillip Bay.

Primary to the design was the use of high gloss finishes to reflect both the city lights and the spectacular views, giving the spaces a sophisticated, contemporary edge with a strong urban aesthetic. The cityscape bathes and reflects off the highly polished black granite stone, bronzed mirrors and glossy black surfaces, or diffuses against softened walls of timber joinery, fabric and furniture forms within.

An oak-lined gallery leads to the open plan kitchen, introducing warmth and maintaining the intimate sense of arrival achieved at entry. Upon entering the kitchen, expansive, spectacular views reveal themselves with the kitchen appearing as an all white insertion in the otherwise sensuously dark space.

The use of polished black granite to the floor and bar, black gloss joinery and bronzed mirrors to the rear dining elevation further introduces a depth of view and the illusion of generous ceiling heights due to its reflective qualities.

Black and white remains the resounding theme throughout the interior, with the texture and form of the materials used and the furniture implemented giving the homely, warm depth required. Standing out as heroes of the interior environment, two Rietveld Utrecht chairs contrast the monochromic palette.

With the chaos ensuing below, a pared back design evokes a sense of serenity, order and retreat. Contemporary lines, uncluttered spaces and classical, balanced form have created a sense of timeless quality that ensures these spaces will remain relevant for many years to come.

Photography by Derek Swalwell



Contacts

Carr Design
Level 4, 31 Flinders Lane
Melbourne VIC 3000
Telephone: (03) 9665 2300

www.carr.net.au