



INTERIORS

Australia & New Zealand

Thames & Hudson

MITCHELL OAKLEY SMITH

Carr Design Group

SUE CARR
MELBOURNE, VICTORIA

Carr Design Group is a Melbourne-based multidisciplinary practice representing over 40 years of work by interior designer Sue Carr. The recipient of the Interior Design Excellence Awards' (IDEA) Gold Medal for Interior Design, Carr is respected for her contribution to the Australian interior design industry since establishing her practice in 1971, then known as Inarc. A practice with over 40 staff, Carr Design Group offers a bespoke service to every client, ensuring each project is executed with quality, sustainability, budget control and design excellence in mind.

When starting out in her career, interior design was not a respected or recognised industry within Australia. Over time, Australia has unravelled the science of how we live and interact with one another in the environments that surround us, and the importance of space, form, light, tactile experiences and materials. Carr approaches her work with the belief that design has the power to make a positive difference to people's sense of wellbeing.

Environmental sustainability is of the utmost importance to the designer, who continually educates clients that the use of such materials and initiatives is comparable in price to more common built forms. Environmental sustainability can no longer be a specialist area within the design industry, employed only when a client's budget or desire allows for it, and Carr Design Group has forged a reputation for its sustainable approach. Carr is similarly concerned about urban sprawl, with 95 percent of Australia's current housing stock operating on or below a 2.5 star energy rating. Australia's preference for big houses has gained the country a residential carbon footprint nearly four times the global average. The trend for big houses is one Carr Design Group strives to reduce.

As a result of extended working hours and the prevalence of technology and entertainment in homes, much of the human

experience is played out within the context of an interior environment. Carr identifies her role as an interior designer as creating environments that respond to the people who inhabit them, providing a quality of living that offers an opportunity to approach everyday activities in interesting ways. Carr's designs are an expression of local identity and balance architectural ideals with climate, social and commercial realities and embrace renewable resources.

The awareness that a greater and more sufficient exchange between the fields of architecture and interior design was needed led the designer to establish Carr Architecture in 2000. A result of having worked for several years at architectural firms prior to establishing her business, Carr maintains a strong interest in structure and form, particularly the way in which detail is expressed, and firmly believes one cannot exist without the other.

The Carr Design Group office operates in a non-hierarchical manner. Each project is discussed in a collaborative way – a workshop-type approach to which Carr attributes her practice's success, including countless Design Institute of Australia and IDEA awards. Working collaboratively on each project ensures expertise from both architecture and interior design disciplines are employed, offering the best possible solution for each design challenge.

As Carr Design Group has grown, Carr has maintained her passion for bespoke, residential interiors. This approach starkly contrasts the majority of designers, who typically reduce their work on bespoke, residential projects as their practice grows. For Carr, these projects are often the most difficult and challenging, and yet continually educate and inspire her design thinking – knowledge that spreads into the other design disciplines.



RESIDENCE 2010 renovation of a 2001-built apartment, originally two separate apartments that had been amalgamated into one.

LOCATION Melbourne, Victoria.

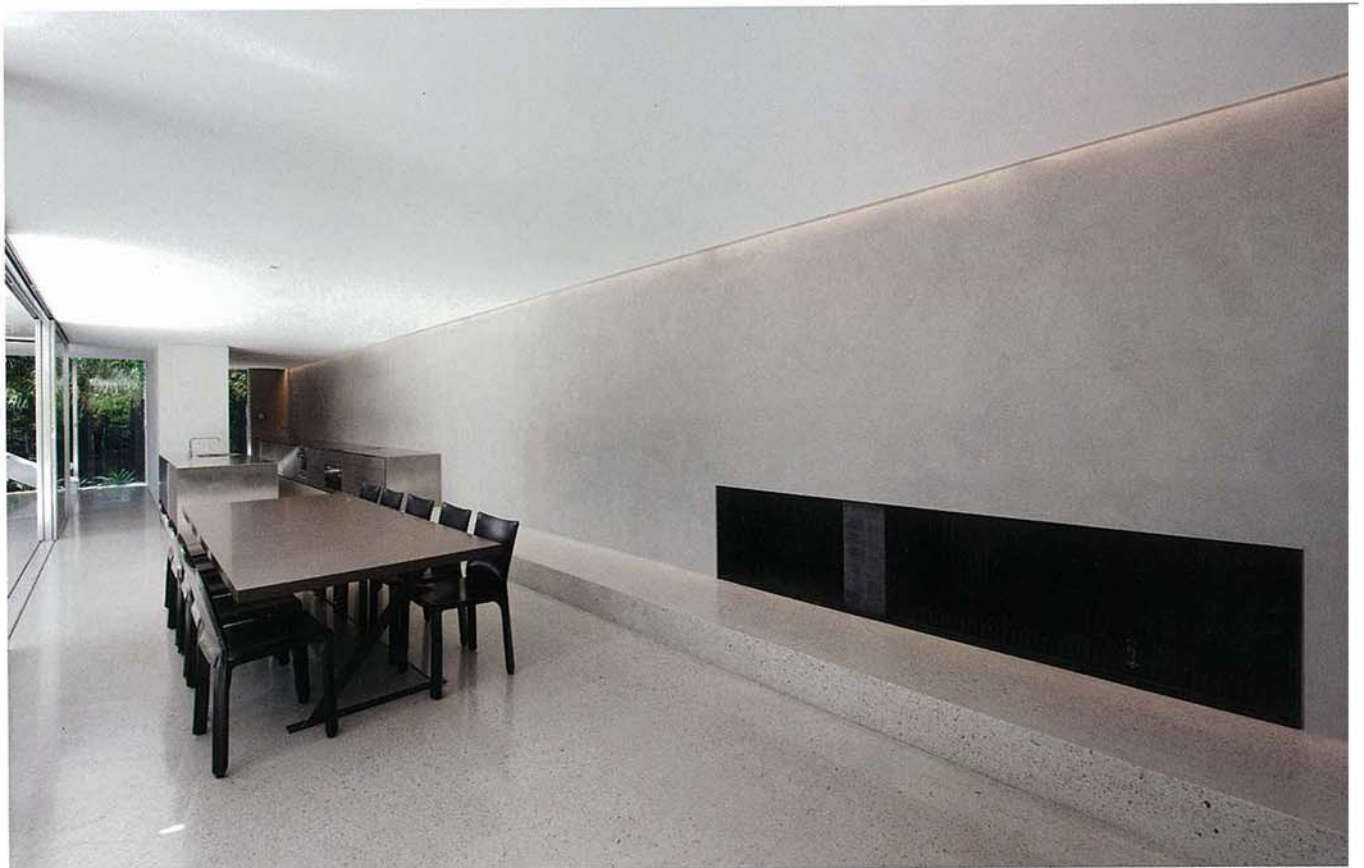
CLIENT Professional couple.

BRIEF Carr Design Group was tasked with rectifying the poorly-executed spatial planning of the original layout. The practice aimed to create simple, clean lines and uncluttered spaces to achieve a sense of quiet and order.



PREVIOUS PAGE The clean interior of the apartment is mirrored by the sharp lines of a modular daybed, Jordan sofa and Santa & Cole tripod floor lamp. **THIS PAGE** Cassina chairs make for a bright reading nook, accompanied by a Knoll-produced Warren Platner side table. **OPPOSITE PAGE** A matching side table sits alongside the Jordan sofa, opposite the Jordan sitting chair. Cassina chairs and Alias stools can be seen to the left.





RESIDENCE 2005 renovation of a 1960s Harry Ernest-designed house.

LOCATION Toorak, Victoria.

CLIENT Carr's own residence.

BRIEF Carr was intent on reducing the house to its structural core, adding an additional rectangular level, housing the master suite. Her use of elemental building materials, including concrete, steel and glass, add to the aesthetic of binaries and allude to the simplicity of 1960s design.



THIS PAGE Terrazzo stairs feature a glass-infilled balustrade. **OPPOSITE PAGE** The stainless steel kitchen features Vola tapware and Miele appliances. Cassina chairs accompany a B&B Italia Maxalto dining table.